



**CHESS  
GAJA**

# **SELECT THE PERFECT CHESS ACADEMY FOR YOUR CHILD**



**PICKING THE RIGHT CHESS  
ACADEMY IS A BIG DECISION  
THAT CAN IMPACT YOUR  
CHILD'S FUTURE.**



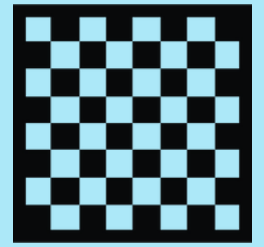
**+91- 8297558254**



**hello@chessgaja.com**

**More Information:**  [www.chessgaja.com](http://www.chessgaja.com)

# SELECT THE PERFECT CHESS ACADEMY FOR YOUR CHILD



## A Parent's Guide

Selecting the right chess academy or coach for your child is crucial for their development in chess. At Chess Gaja Pvt Ltd, with our extensive experience coaching over 5000+ students from more than 20+ countries, we've prepared a detailed guide to assist you in making a well-informed choice.

## 1. View Students' Victories

### Why It Matters

The achievements of students at a chess academy are a direct reflection of the quality and effectiveness of its training programs. High levels of success suggest a supportive and skilled coaching environment.

### What to Check

Investigate the academy's history of student achievements, particularly looking for students who have attained high titles such as **National Master**, **International Master**, **Grandmaster**, or **FIDE ratings above 2000**.

### Red Flag

If the academy has few or no documented achievements, or if student successes are limited to lower-level competitions, it might not be equipped to support higher-level competitive training.

## 2. Focusing on Coach Credentials

### Why It Matters

The qualifications and experience of the head coach are critical, as they set the educational standard and coaching quality of the academy.

### What to Check

Ensure the main coach has verifiable high ratings and a proven track record in coaching. Their active involvement in daily coaching activities is essential.

### Red Flag

Some academies might highlight a star chess player as a brand ambassador to attract students. However, if this role is primarily for marketing and lacks substantive student interaction, it might not contribute to your child's chess education.

## 3. Understanding Academy Refund Policies

### Why It Matters

A fair and transparent refund policy signifies the academy's confidence in their services and respect for your financial commitment.

### What to Check

Look for clear, straightforward refund policies that allow flexibility if the program does not meet your expectations or if your circumstances change.

### Red Flag

A non-flexible or unclear refund policy can indicate potential difficulties if you decide the academy is not the right fit after enrolling.

## 4. Extra Learning Support

### Why It Matters

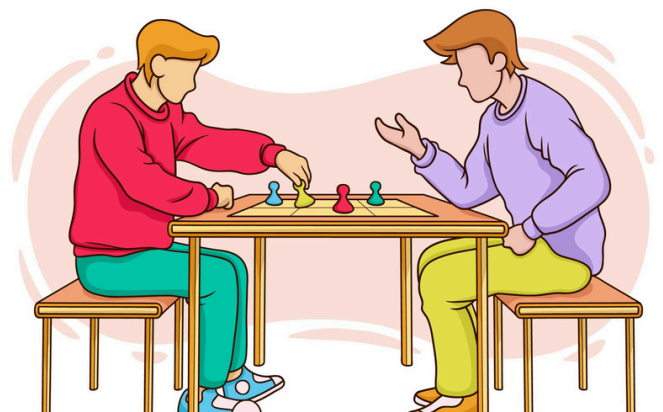
Comprehensive educational support goes beyond routine classes. It includes personalized study plans, regular practice tournaments, and additional learning materials, all of which are vital for holistic chess development.

### What to Check

Evaluate the extent of additional services provided, including the tools used for teaching, such as Learning Management Systems (LMS), Zoom, or Skype. Effective academies often use a combination of these tools to deliver their curriculum and maintain engagement.

### Red Flag

If an academy offers minimal or no extra educational resources or relies on outdated or inefficient teaching tools, it may not be fully committed to the overall development of its students.



## 5. Demo Class Quality

### Why It Matters

Demo classes are often offered by academies more focused on recreational or hobbyist activities rather than serious, competitive training. These sessions are typically used as a marketing tool to attract new students.

### What to Consider

Be cautious if a demo class is given much emphasis. There is a risk that the coach who conducts the demo might not be the one who continues with regular classes, or the academy might frequently change coaches after you enroll, which can disrupt the learning process and affect the consistency of training.

### Red Flag

Frequent changes in the coaching staff post-enrollment or a mismatch in the teaching quality from the demo to regular classes can be a major concern, indicating instability and a lack of commitment to consistent, high-quality education.

## 6. Comparing Pricing Across Various Academies

### Why It Matters

Pricing should reflect the value offered by the academy, considering the depth of training, expertise of the coaches, and additional services provided.

### What to Check

Compare pricing structures between different academies while considering what is included in the cost. More expensive options may offer better value through more intensive coaching and additional benefits.

### Red Flag

Extremely low prices may be appealing but can indicate a lack of depth in training or inexperienced coaches.

## Conclusion

Choosing the right chess academy or coach for your child involves a careful analysis of various factors. At Chess Gaja Pvt Ltd, we are committed to helping you make an informed decision that best suits your child's needs and aspirations. By evaluating potential academies or coaches with this detailed guide, you can ensure a fruitful and enriching chess learning experience.